

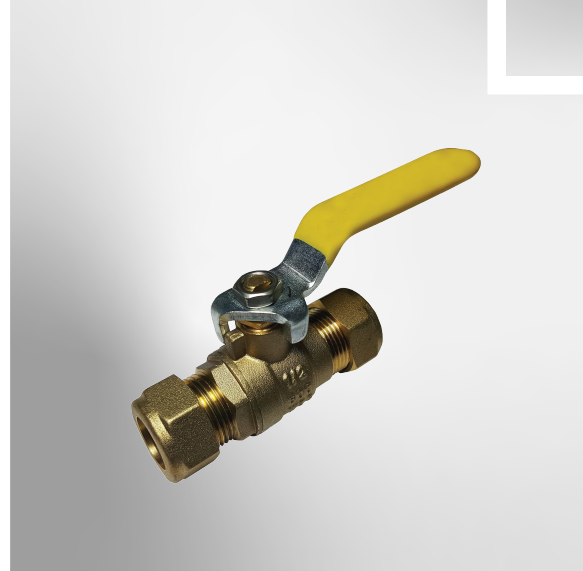
B **BĀJRANG**
BRASS INDUSTRIES



BRASS BALL VALVE



M/F BRASS BALL VALVE



Component	Material
1. Nut	Stainless Steel
2. Handle	Mild steel (Powder Coated) Or Stainless Steel
3. STEM	Brass Rod
4. Ball	Brass
5. Ball SEAT	PTFE
6. Cap	Brass Forged
7. Body	Brass Forged

Thread : BSP, NPTF

Finishing : Natural, Brass, Nickel, Zinc Plating Any Coating As per Customer Requirements

Component	Material
1. Nut	Stainless Steel
2. Handle	Mild steel (Powder Coated) Or Stainless Steel
3. STEM	Brass Rod
4. Ball	Brass
5. Ball SEAT	PTFE
6. Cap	Brass Forged
7. Body	Brass Forged

Thread : BSP, NPTF

Finishing : Natural, Brass, Nickel, Zinc Plating Any Coating As per Customer Requirements

DN	Size	D	L	H	G	F	Weight(gm.)
10	1/4"	9	49	30	88	12	155
10	3/8"	9	49	30	88	12	150
15	1/2"	14	58	44	94	15.5	185
20	3/4"	19	62	50	99	16	285
25	1"	23	69	59	121	17	370
32	1 1/4"	30	85	73	150	19	670
40	1 1/2"	35	94	75	150	23	860
50	2"	45	110	82	155	23	1350
63	2 1/2"	58	138	110	235	30	2550

Size	D	L	H	G	F	Weight(gm.)
1/2" x 1/2"	14	53	43	88	14	180

BRASS CHECK VALVE(VERTICAL)



Screwed Female Ends
 Meant for Horizontal Lines Only.
 Permits flow in one direction

DN	Size	D	L	B	Weight(gm.)
15	1/2"	17	60	36	140
25	1"	26	74	48	275
25	1"(M)	28	57	45	175
40	1.1/2"	40	88	72	650

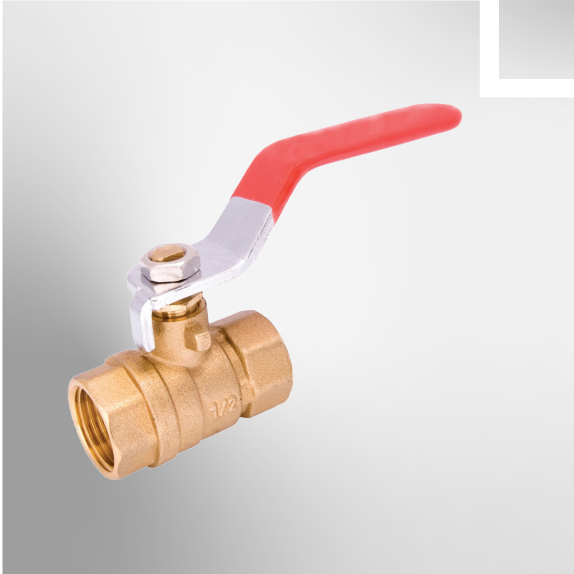
BRASS CHECK VALVE(HORIZONTAL)



Screwed Female Ends
 Meant for Horizontal Lines Only.
 Permits flow in one direction
 Forged Brass Body
 Available size 15mm to 50mm

DN	Size	D	L	H	G	Weight(gm.)
15	1/2"	13.5	45	33	11	100
20	3/4"	18	49	37	12	140
25	1"	22	59	40	14	220
25	1"(H)	22	59	40	14	325
32	1.1/4"	28	65	46	15	350
40	1.1/2"	32	75	52	17	525
50	2"	42	85	60	19	800

Rain Brass Ball Valve



3-Way Ball Valve



Component	Material
1. Nut	Stainless Steel
2. Handle	Mild steel (Powder Coated) Or Stainless Steel
3. STEM	Brass Rod
4. Ball	Brass
5. Ball SEAT	PTFE
6. Cap	Brass Forged
7. Body	Brass Forged

Thread : BSP, NPTF

Finishing : Natural, Brass, Nickel, Zinc Plating Any Coating As per Customer Requirements

Component	Material
1. Material	Brass
2. Seal	PTFE
3. Seat	PTFE
4. Size	1/2", 1"
5. Thread	Female NPT x Female NPT x Female NPT
6. Pressure Rating	400 PSI WOG
7. Saturated Steam Pressure	100 PSI
8. Maximum Temperature	366F(185C)
9. Optional Pkg/Box Qty	10
10. Weight Lb	1.2100
Size	15mm
Weight(gm.)	200

DN	Size	D	L	H	G	F	Weight(gm.)
10	1/4"	9	49	30	88	12	155
10	3/8	9	49	30	88	12	150
15	1/2"	14	58	44	94	15.5	185
20	3/4"	19	62	50	99	16	285
25	1"	23	69	59	121	17	370
32	1 1/4"	30	85	73	150	19	670
40	1 1/2"	35	94	75	150	23	860
50	2"	45	110	82	155	23	1350
63	2.1/2"	58	138	110	235	30	2550

Brass Extension Nipple



Size	1/2 inch
Thread Type	1/2" BSP
Application	WATER TAP FITTINGS
Thread Size	1/2" BSP THREAD
Thread:	Available in 30gm/inch, 35gm/inch, 40gm/inch
size(inch):	30gm, 1", 1.12", 2", 2. 1/2", 3", 4", 5", 6", Hex(M), Hex(H)

Push West Coupling



Material: Brass and Rubber Washer
 Surface Finish: Chrome Plated
 Size: 1.1/4"
 Length: 3" inch, 4" inch and 6" inch
 Rust and Corrosion resistance. Highly Durable

Size	Weight(gm.)
3" (M)	115-120
3" (H)	145-150
4"	170-175
6"	210-215

West Coupling



Material: Brass and Rubber Washer
Surface Finish: Chrome Plated
Size: 1.1/4"
Length: 3" inch, 4" inch and 6" inch
Rust and Corrosion resistance. Highly Durable

Size	Weight(gm.)
3" (M)	115-120
3" (H)	145-150
4"	170-175
6"	210-215



Plot No. 164-165,
Nr. Shivam Park-4, Dared,
Jamnagar, Gujarat - 361012



+91 84011 42854
+91 99046 23996



bajrangbrass478@gmail.com



www.bajrangbrass.metallsinternational.com